

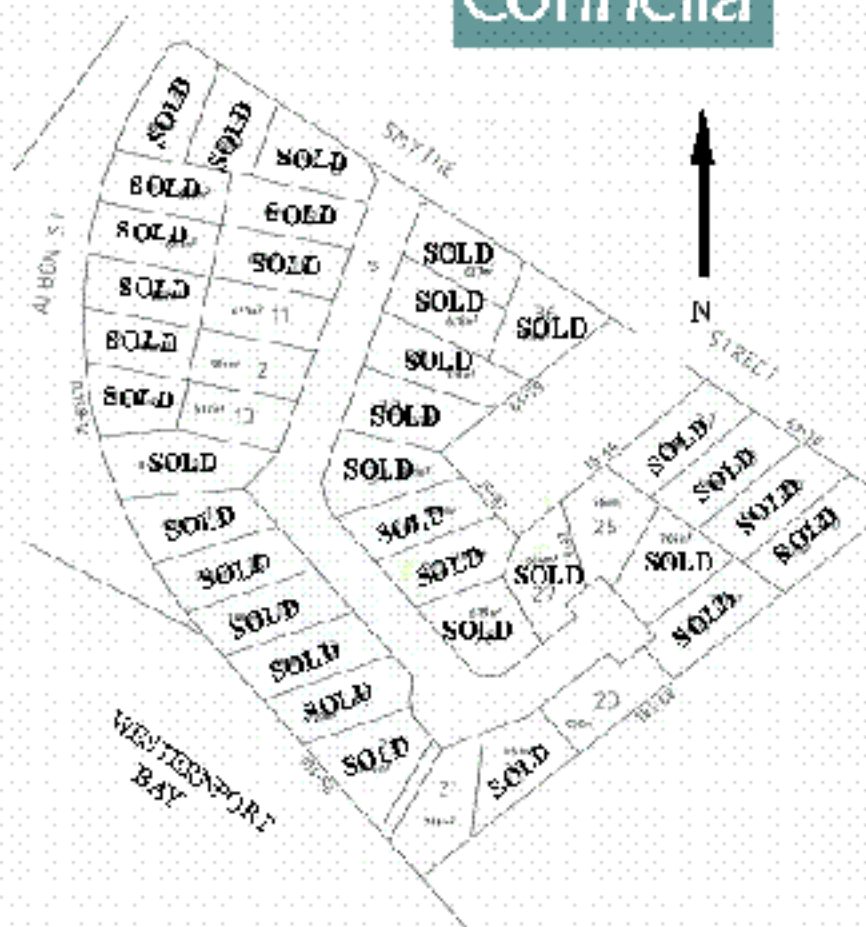
# Spinnaker Point

Corinella



5/1524 Bass Highway, Grantville

Ph. 5678 8988



- Exclusive land release of only 40 lots
- Size range 527 sqm - 872 sqm
- Bay views from all blocks
- All services underground
- Protective building covenant
- 1 hour commuting from Melbourne via dual Highway
- Close to Community Centre, bowls, jetty and general store
- Recreational boating facilities

**PEACEFUL AND  
TRANQUIL  
ENVIRONMENT**

**8 LOTS WITH  
ABSOLUTE  
WATER FRONTAGE**

**VIEWS  
TO  
PHILLIP ISLAND**



Lot 4	SOLD
Lot 11	\$125,000
Lot 12	\$135,000
Lot 13	\$170,000
Lot 21	\$275,000
Lot 23	\$160,000
Lot 26	\$150,000